



How To Order

3KH G1/2 L 1 1 1 2 SB01
 (1) (2) (3) (4) (5) (6) (7) (8)

- (1) Model: 3KH = 3 way ball valve
4KH = 4 way ball valve

- (2) Thread size or pipe outside diameter: A = Female thread ISO 228 (see Dimensions)
B = Male thread JB984-77 (see Dimensions)
C = Male thread DIN 2353 light series (see Dimensions)
D = Male thread DIN 2353 heavy series (see Dimensions)

- (3) Ball symbol 3KH-L; 3KH-T; 4KH-L; 4KH-T; 4KH-X

- (4) Block & connection material: 1 = Carbon steel
2 = Stainless steel

- (5) Ball & stem material: 1 = Carbon steel
2 = Stainless steel

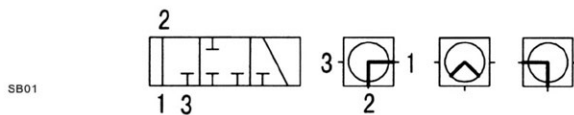
- (6) Ball seat material: 1 = POM

- (7) Connection & stem seal: 2 = NBR
4 = FPM

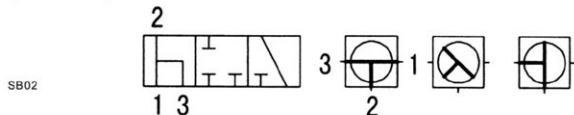
- (8) Porting pattern type: e.g. SB01 (see Porting pattern)

Porting pattern (See chart)

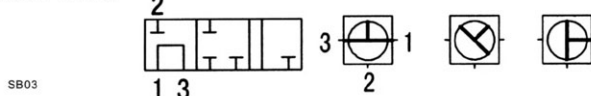
3 way ball valve L type 90° reversing , 45° closure



3 way ball valve L type 90° reversing , 45° closure

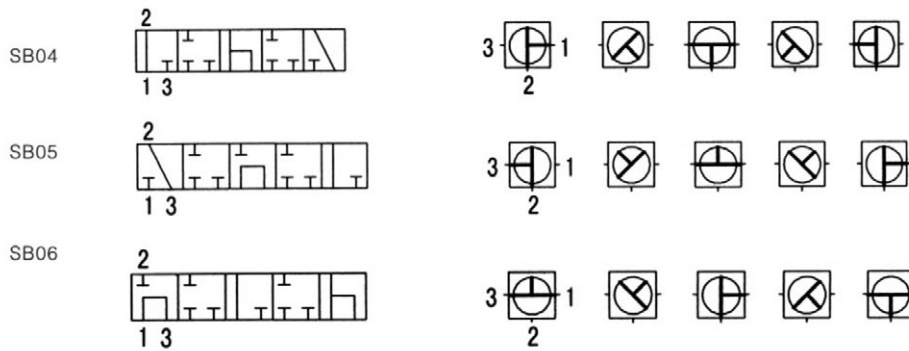


3 way ball valve T type 90° reversing



Porting pattern (See chart)

3 way ball valve T type 180° reversing



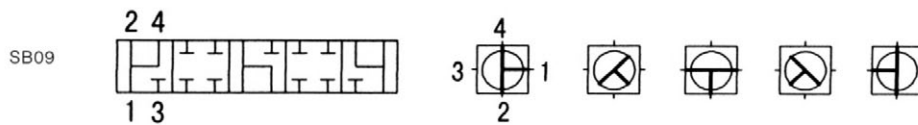
4 way ball valve T type 180° reversing



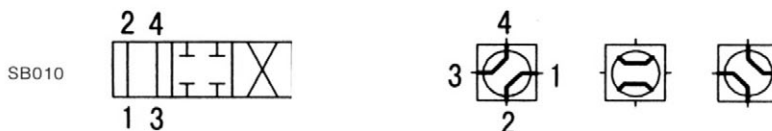
4 way ball valve T type 90° reversing



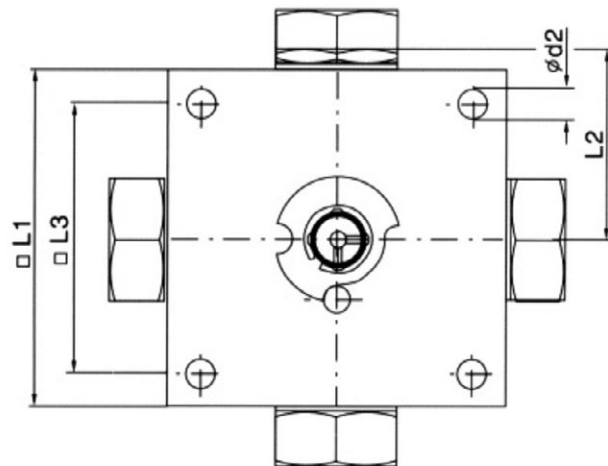
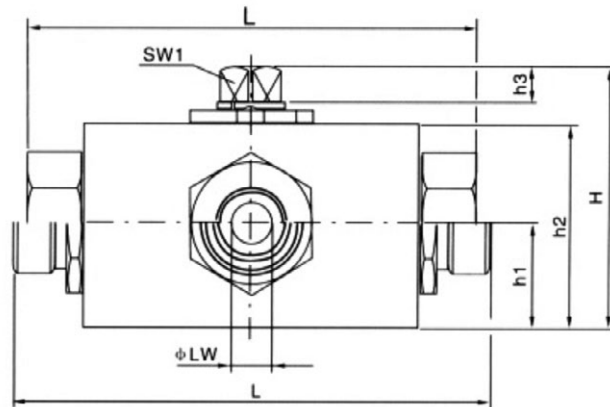
4 way ball valve T type 180° reversing



4 way ball valve X type 90° reversing



Dimensions



Order information

ISO 228 Female

Model	DN	PN	LW			RA	d1	i	I	L1	L2	L3	H	h1	h2	h3	d2	SW1	SW2
			L	T	X														
3KH/4KH-G1/8	4	500	5	5	4,5		G1/8	10	100	70	42,5	55	57	22	40	11	6,5	12	24
3KH/4KH-G1/4	6	500	5	5	4,5		G1/4	14	100	70	42,5	55	57	22	40	11	6,5	12	24
3KH/4KH-G3/8	10	500	9	9	6		G3/8	14	115	80	46	65	67,5	27	50	11,5	6,5	14	30
3KH/4KH-G1/2	13	500	12	12	10		G1/2	16	135	100	56	80	77,5	31	60	11,5	9	14	36
3KH/4KH-G3/4	20	500	18	18	14		G3/4	18	144	100	58	85	92	36	73	11,5	9	17	46

DIN 2353 Light series

Model	DN	PN	LW			RA	d1	i	I	L1	L2	L3	H	h1	h2	h3	d2	SW1	SW2
			L	T	X														
3KH/4KH-06LR	4	500	5	5	4,5	6	M12x1,5	10	105	70	42,5	55	57	22	40	11	6,5	12	24
3KH/4KH-08LR	6	500	5	5	4,5	8	M14x1,5	10	105	70	42,5	55	57	22	40	11	6,5	12	24
3KH/4KH-10LR	8	500	9	9	6	10	M16x1,5	11	114	80	48	65	67,5	27	50	11,5	6,5	14	30
3KH/4KH-12LR	10	500	9	9	6	12	M18x1,5	11	114	80	48	65	67,5	27	50	11,5	6,5	14	30
3KH/4KH-15LR	12	500	12	12	10	15	M22x1,5	12	136	100	56	80	77,5	31	60	11,5	9	14	36
3KH/4KH-18LR	16	500	12	12	10	18	M26x1,5	12	136	100	56	80	77,5	31	60	11,5	9	14	36
3KH/4KH-22LR	20	500	18	18	14	22	M30x2	14	143	100	58	85	92	36	73	11,5	9	17	46

DIN 2353 Heavy series

Model	DN	PN	LW			RA	d1	i	I	L1	L2	L3	H	h1	h2	h3	d2	SW1	SW2
			L	T	X														
3KH/4KH-08SR	4	500	5	5	4,5	8	M16x1,5	12	105	70	42,5	55	57	22	40	11	6,5	12	24
3KH/4KH-10SR	6	500	5	5	4,5	10	M18x1,5	12	105	70	42,5	55	57	22	40	11	6,5	12	24
3KH/4KH-12SR	8	500	9	9	6	12	M20x1,5	12	116	80	46	65	67,5	27	50	11,5	6,5	14	30
3KH/4KH-14SR	10	500	9	9	6	14	M22x1,5	14	120	80	46	65	67,5	27	50	11,5	6,5	14	30
3KH/4KH-16SR	12	500	12	12	10	16	M24x1,5	14	140	100	56	80	77,5	31	60	11,5	9	14	36
3KH/4KH-20SR	16	500	12	12	10	20	M30x2	16	144	100	56	80	77,5	31	60	11,5	9	14	36
3KH/4KH-25SR	20	500	18	18	14	25	M36x2	16	151	100	58	85	92	36	73	11,5	9	17	46